

EN.25 COUPLING / CONNECTION (for joining pipes)



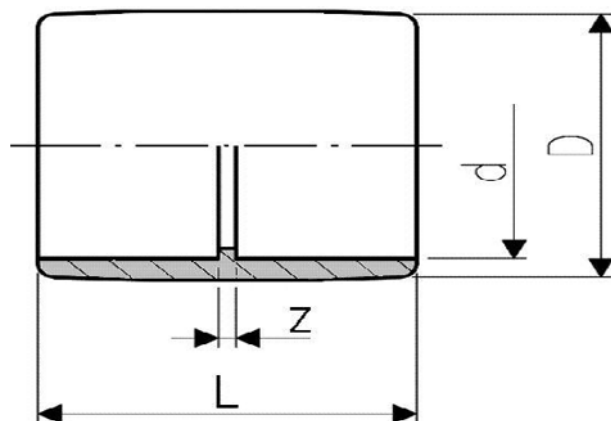
MODELS:

EN.25	ABS Red
EN.25 B	ABS White
EN.25 RF	ABS Fireproof Red

SIZE:

Quotes in Millimeters

D =	∅ 30,6
d =	∅ 25
Z =	3
L =	43



Presentation: 10 units.

MATERIAL:

ABS (Acrylonitrile-Butadiene-Styrene)

Robust polymere with physic features for optimum strength to expansion and impact, hard resistance, high longevity, high resisting to temperatures bellow 0°.

ABS is a Halogen-free thermoplastic.

Maximum temperatures of use. -35° to 60°