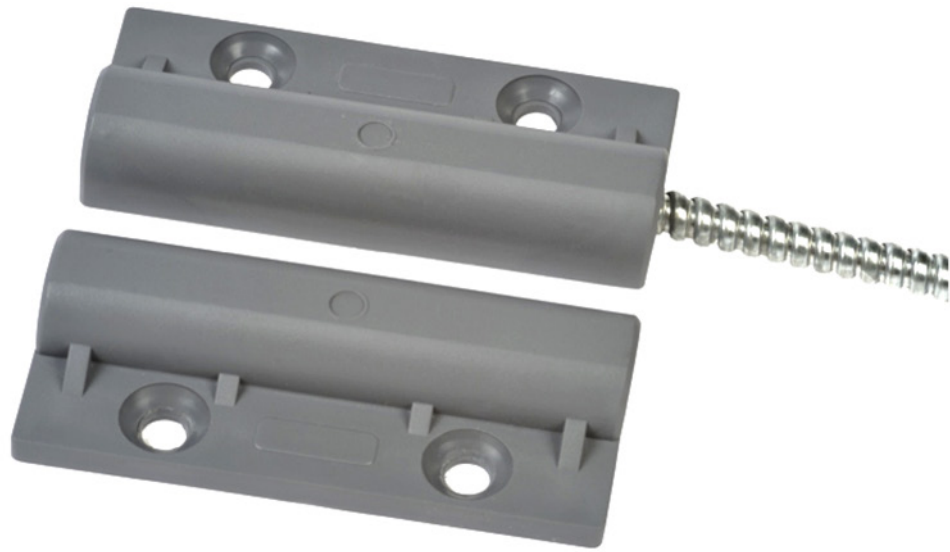


DW2200

SIDE CONTACT HIGH POWER



OVERALL

The side contacts of the DW2200 series are designed for installations where a high power is needed. Ideal for metallic doors.

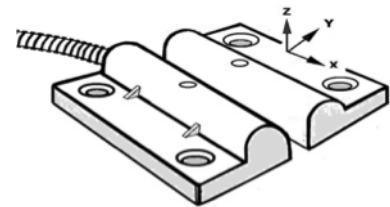
Certificate: **EN 50131-2-6 Grade 2 Class III**

Models: **DW2200/6:** the same characteristics with 6 meters of wire
DW2200/10: the same characteristics with 10 meters of wire



TECHNICAL SPECIFICATIONS

Contact type	-----	NA
Switching Voltage	-----	Max. 100 V cc
Switching Current	-----	Max 500 mA
Nominal Supply	-----	Max 30 V cc
Contact Current	-----	Max 200 mA
Contact Resistance	-----	250 mΩ
Cable hose 4 x 0.18	-----	2 meters
Flexo Cable Protector	-----	Steel
Reed Wire Colour	-----	Red / White
Contact Measures (mm)	-----	72 x 17 x 14
Case Material	-----	Aluminium
Colour	-----	Electro polished
Magnet Type	-----	AlNiCo 5 (8x50)
Temperature Range	-----	-30°C to +70°C
Protection category	-----	Class III

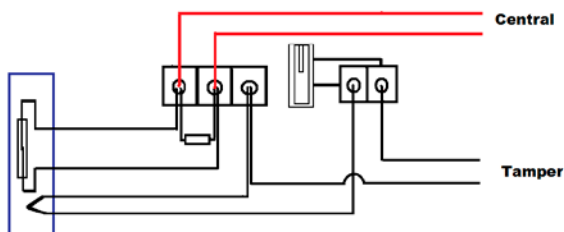


OPERATING RANGE $\pm 5\%$

- Upon Non-Ferromagnetic material
Y opening 60 mm - closing 50 mm
Z opening 70 mm - closing 55 mm
X lateral 25 mm
- Upon Ferromagnetic material
 25% under table

CONNECTION TO JUNCTION BOX CCM (NOT INCLUDED)

- Conexión con 2 hilos serie + 2 TAMPER



- Conexión con 2 hilos en serie con TAMPER

