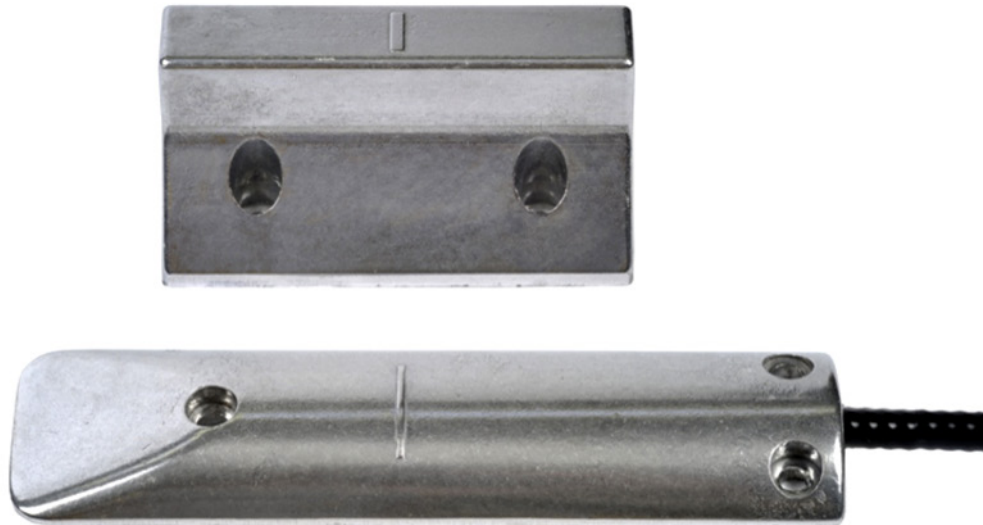


DW2350

ALUMINIUM BASE MAGNETIC CONTACT HIGH POWER



OVERALL

The base magnetic contacts of the DW2350 series are made of aluminum designed to support the weight of heavy vehicles. Ideal for metallic shutter and up and over doors.

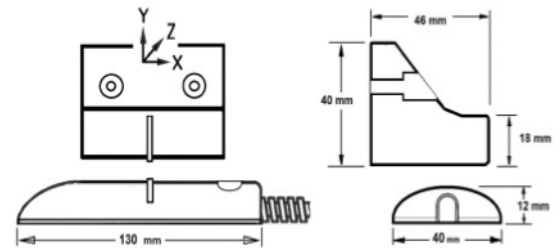
Certificate: *EN 50131-2-6 Grade 2 Class III*

Models: **DW2350/6:** the same characteristics with 6 meters of wire
DW2350/10: the same characteristics with 10 meters of wire



TECHNICAL SPECIFICATIONS

Contact type	-----	NA
Switching Voltage	-----	Max. 100 V cc
Switching Current	-----	Max 500 mA
Nominal Supply	-----	Max 30 V cc
Contact Current	-----	Max 200 mA
Contact Resistance	-----	250 mΩ
Cable hose 4 x 0.18	-----	2 meters
Flexo Cable Protector	-----	Steel
Reed Wire Colour	-----	Red / White
Contact Measures (mm)	-----	130 x 40 x 12
Magnet Measures (mm)	-----	95 x 46 x 40
Case Material	-----	Aluminium
Colour	-----	Electro polished
Magnet Type	-----	Isotropic Ferrite
Temperature Range	-----	-30°C to +70°C
Protection category	-----	Class III

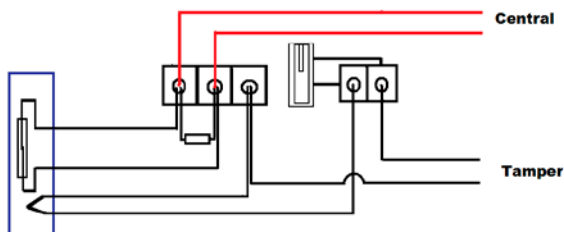


OPERATING RANGES $\pm 10\%$

- Upon Non-Ferromagnetic material
Y opening 95 mm - closing 75 mm
Z opening 50 mm - closing 50 mm
X lateral 35 mm
- Upon Ferromagnetic material
 20% under table

CONNECTION TO JUNCTION BOX CCM (NOT INCLUDED)

- Conexión con 2 hilos serie + 2 TAMPER



- Conexión con 2 hilos en serie con TAMPER

